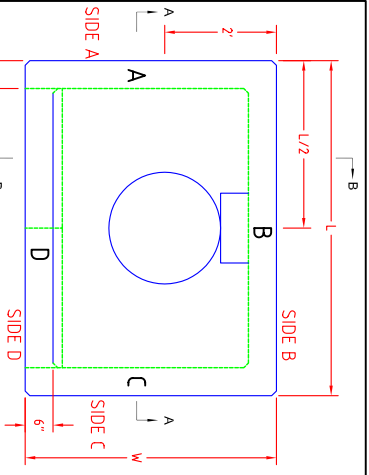


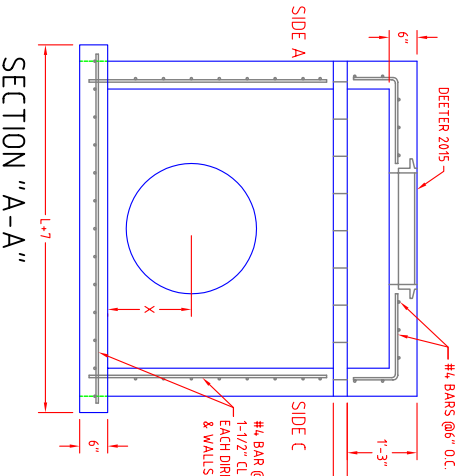
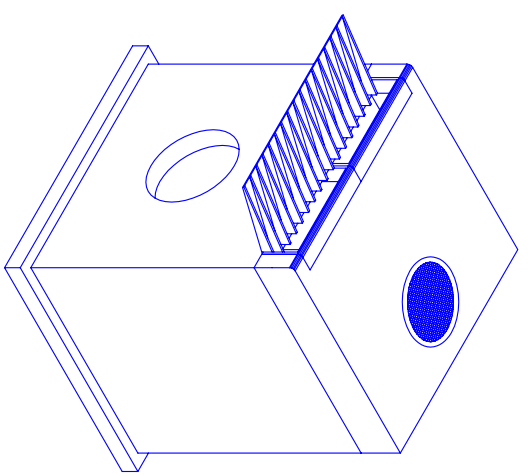
TYPE A5 CURB INLET



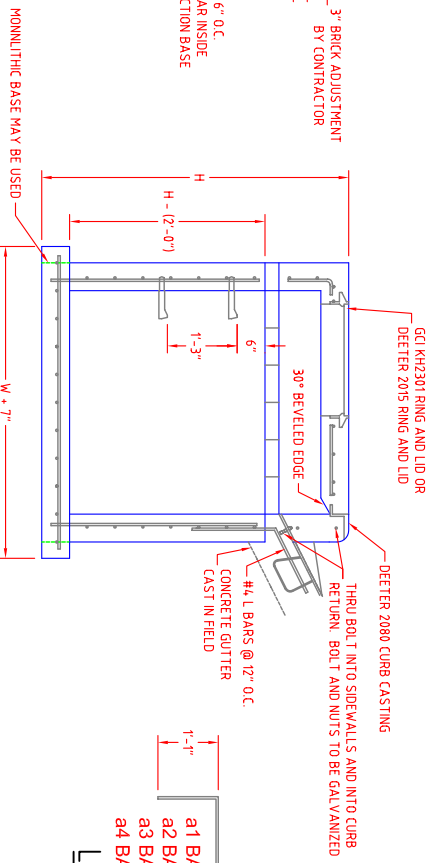
TOP VIEW

"L" VARIES BASED UPON # OF CURB CASTING
 (A2.5) L= 3'-6" FOR ONE CURB CASTING
 (A5) L= 6'-0" FOR TWO CURB CASTING
 (A7.5) L= 8'-6" FOR THREE CURB CASTINGS
 (A10) L= 11'-0" FOR FOUR CURB CASTINGS
 (A15) L= 15'-0" FOR SIX CURB CASTINGS

CURB CASTING AND VANE GRATE
 TO BE DEETTER 2080 OR EQUAL.
 RING AND LID TO BE DEETTER 2015,
 GCI KH2301 OR EQUAL.



SECTION "A-A"



SECTION "B-B"

L-BARS

- a1 BARS W-(4") 2 ea.
- a2 BARS W-(1'-0") 6 ea.
- a3 BARS W-(3'-2 3/4") 2 ea.
- a4 BARS W-(3'-6 3/8") 2 ea.