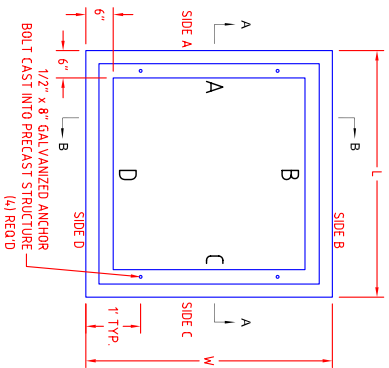
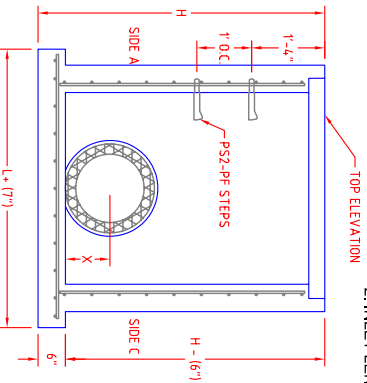
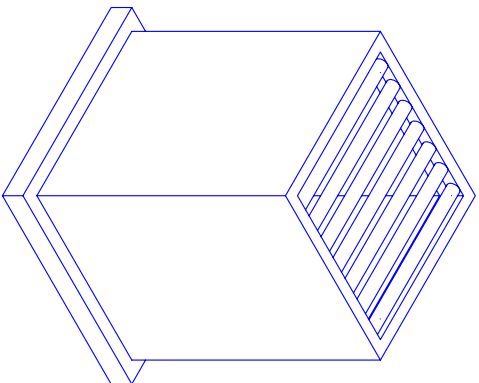


INLET MANHOLE SPECIAL



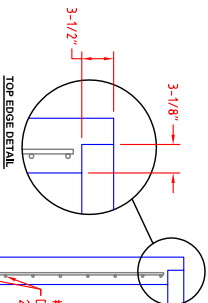
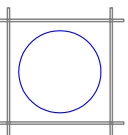
TOP VIEW

- NOTE:**
 1. STEEL PIPE GRATE TO BE FABRICATED, GALVANIZED AND INSPECTED BY OTHERS PRIOR TO INSTALLATION.
 2. INLET LENGTH TO BE PARALLEL TO ROADWAY.

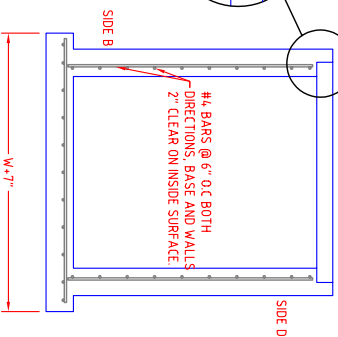


SECTION "A-A"

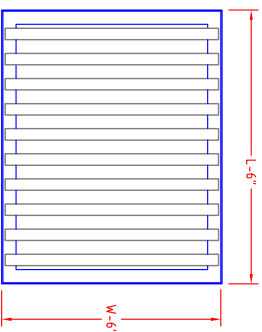
REINFORCING DETAIL
 TYPICAL BLOCKOUT REINFORCING
 4 EA. # 4 BARS X 30"



#4 BARS @ 6" O.C BOTH DIRECTIONS, BASE AND WALLS 2" CLEAR ON INSIDE SURFACE.



SECTION "B-B"



GRATE DETAIL.
 NOTE: PIPES WILL ALWAYS SPAN THE WIDTH OF THE INLET.