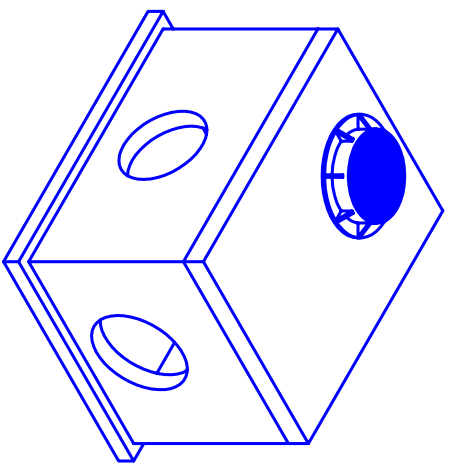
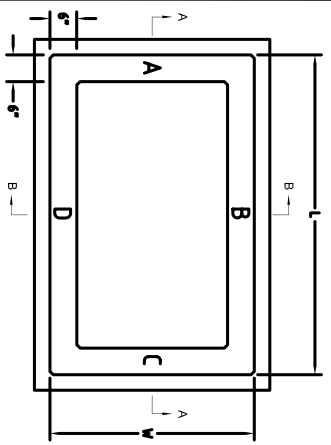


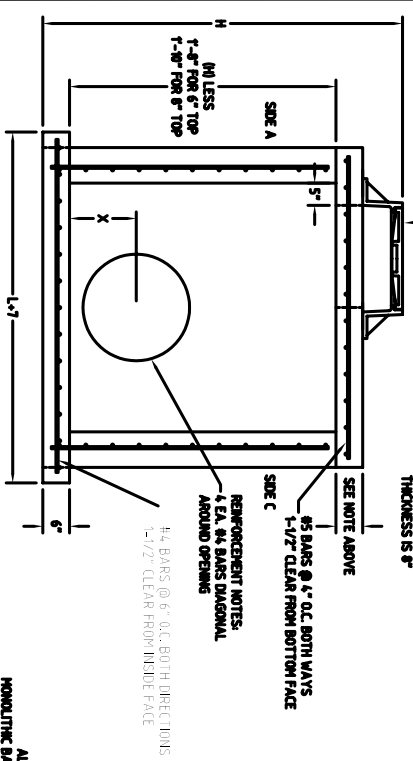
KDOT STANDARD MANHOLE



TOP VIEW

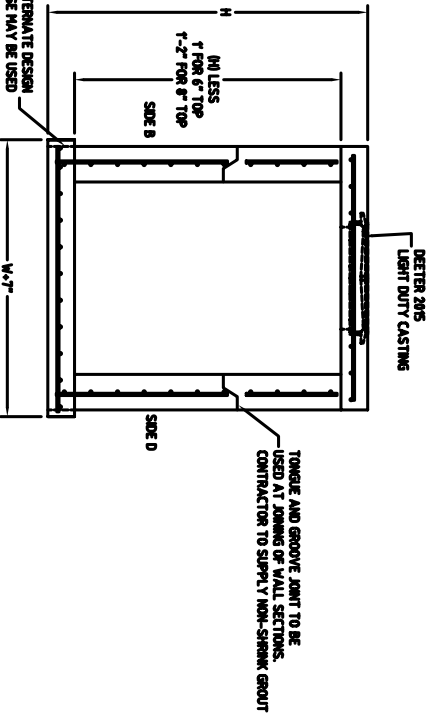
DETER 2210
HEAVY DUTY CASTING
SHOWN ECCENTRIC

TOP THICKNESS IS 6" UNLESS THE "A" OR "B" IS 6' OR GREATER, THEN THE THICKNESS IS 8"



SECTION "A-A"

ALTERNATE DESIGN
MONOLITHIC BASE MAY BE USED



SECTION "B-B"

DETER 2015
LIGHT DUTY CASTING

TONGUE AND GROOVE JOINT TO BE USED AT JOINING OF WALL SECTIONS. CONTRACTOR TO SUPPLY NON-SHRINK GROUT