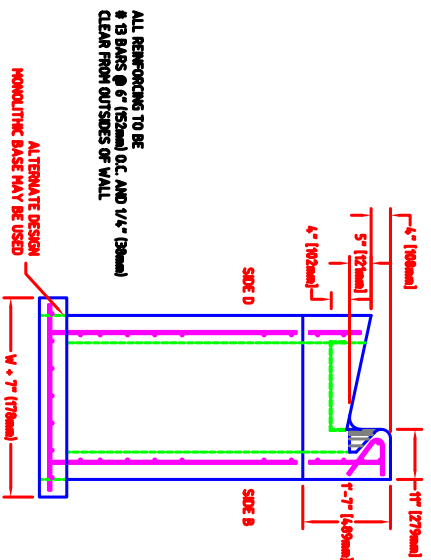
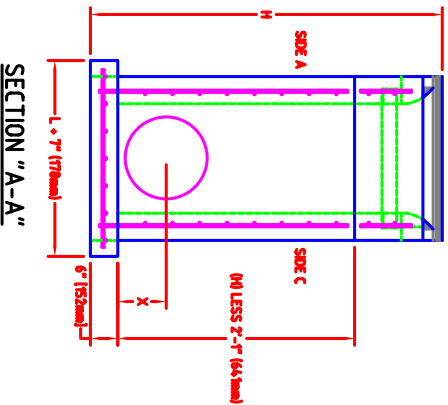
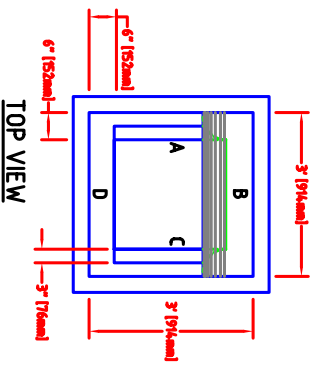
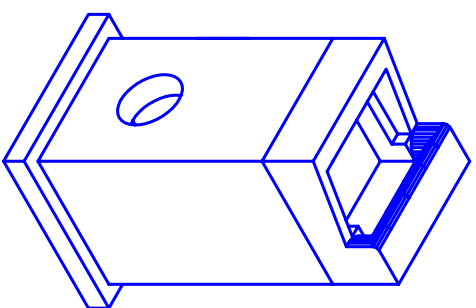


KDOT TYPE 10 CURB INLET



ALL REINFORCING TO BE #10 BARS @ 6" (152mm) O.C. AND 1/4" (6mm) CLEAR FROM OUTSIDES OF WALL

ALTERNATE DESIGN MONOLITHIC BASE MAY BE USED



NOTE FRAME AND GRATE TO BE FABRICATED, GALVANIZED AND INSPECTED BY OTHERS PRIOR TO INSTALLATION IN CURB INLET