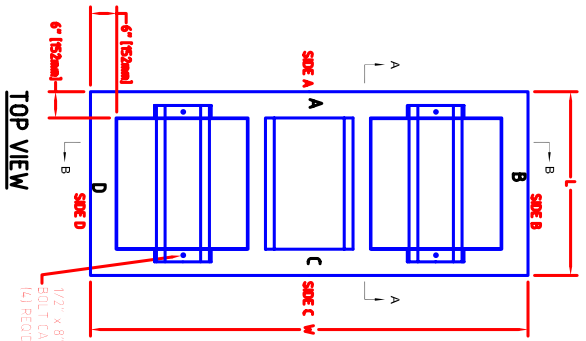
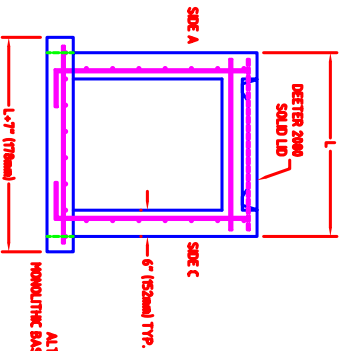
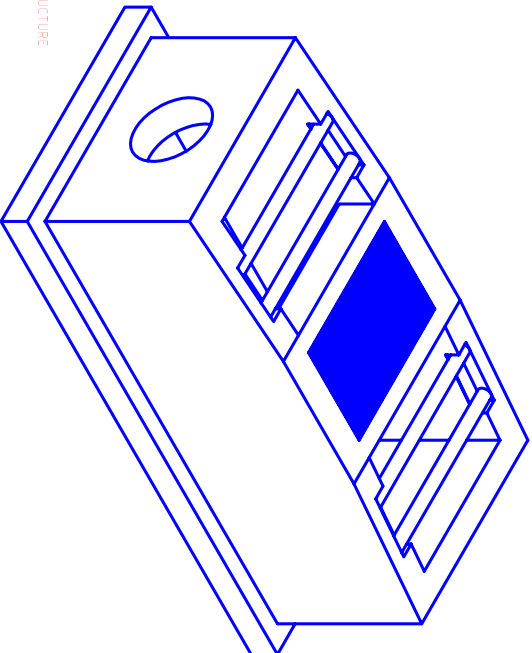


KDOT TYPE 2 DITCH INLET

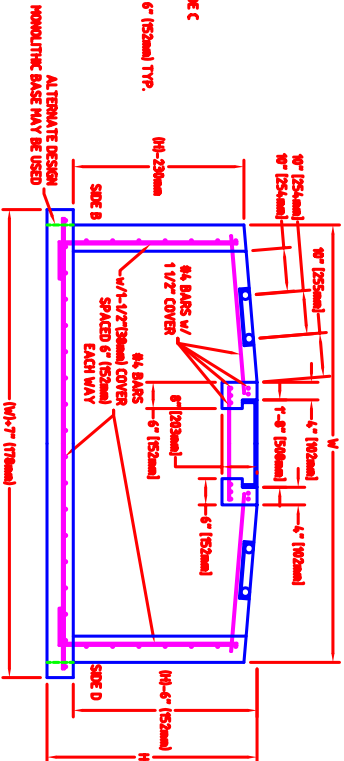


1/2" x 8" GALVANIZED ANCHOR
BOLT CAST INTO PRECAST STRUCTURE
(4) REQ'D.

TOP VIEW



SECTION "A-A"



SECTION "B-B"

ALTERNATE DESIGN
MONOLITHIC BASE MAY BE USED

DETAIL

